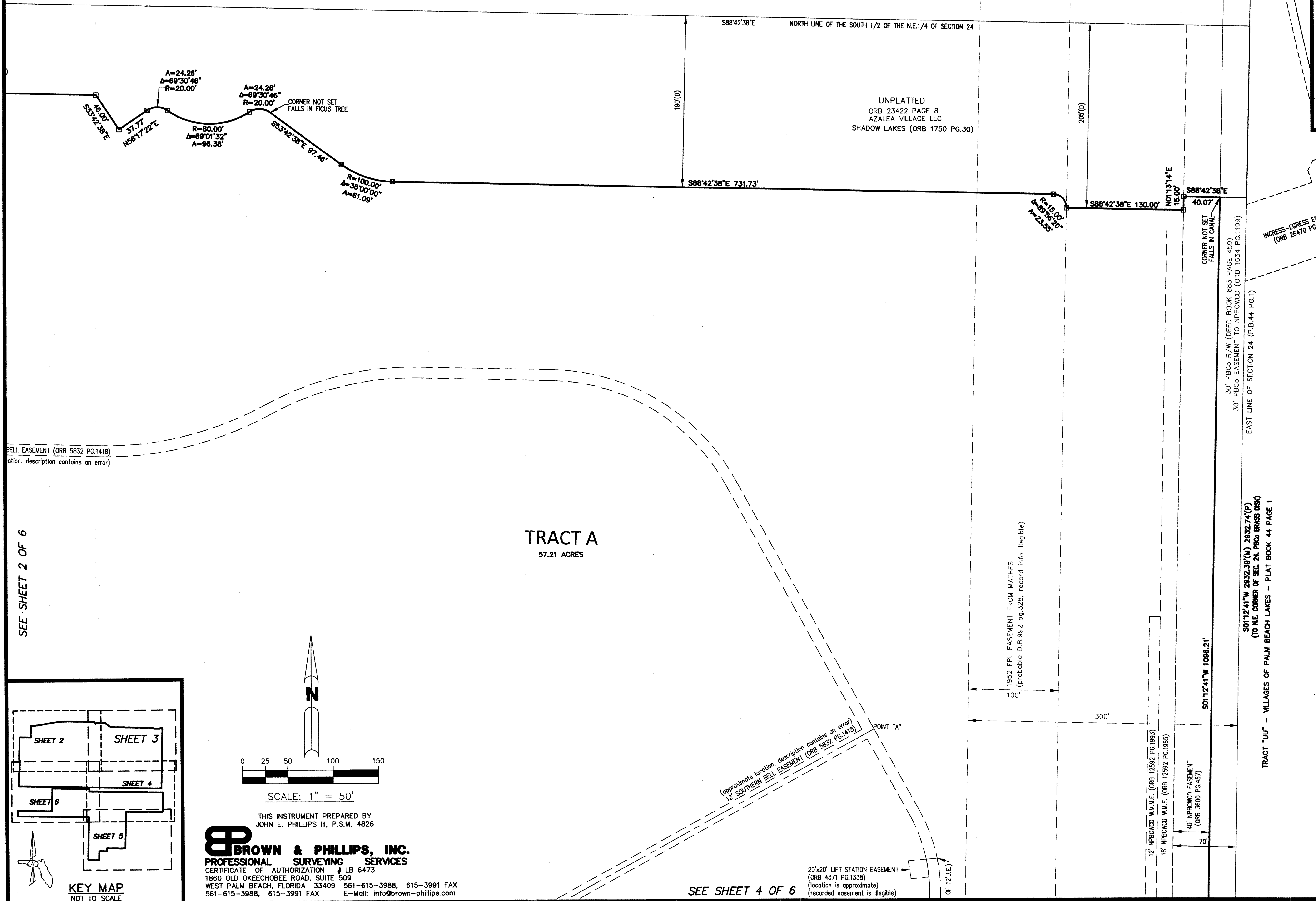


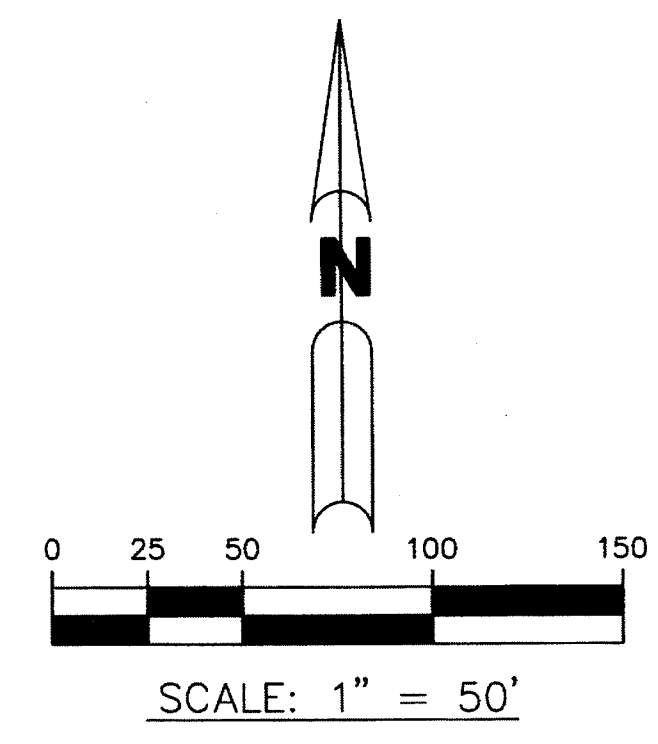
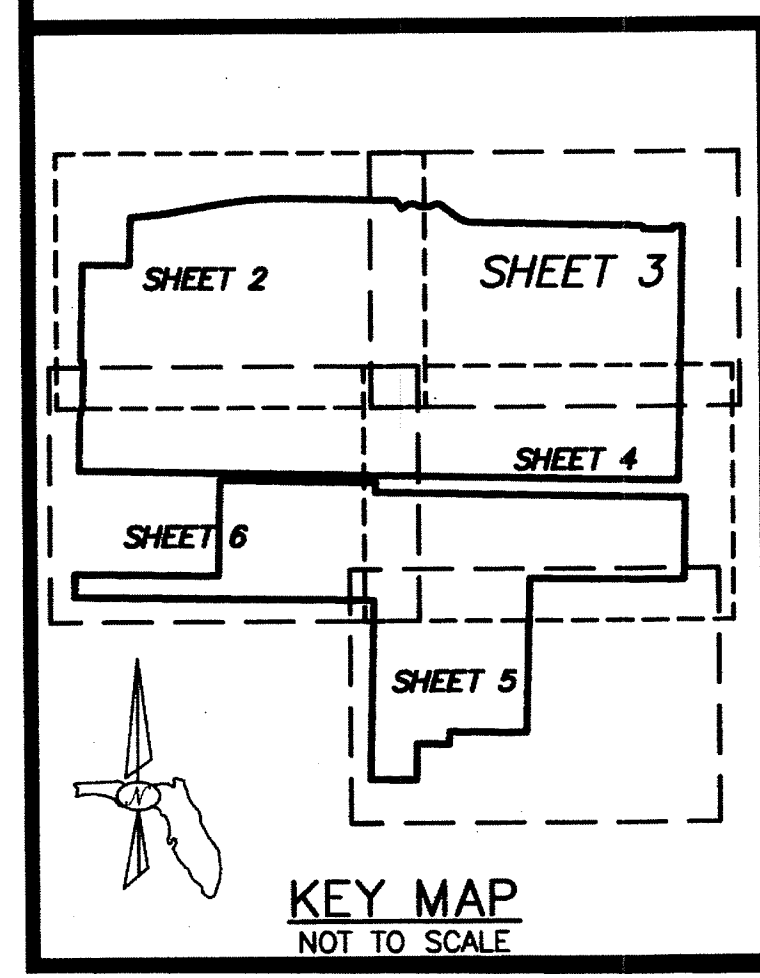
# NORTHWOOD UNIVERSITY

LYING IN SECTION 24 TOWNSHIP 43 SOUTH, RANGE 42 EAST, CITY OF WEST PALM BEACH, PALM BEACH COUNTY, FLORIDA;  
A REPLAT OF "F.E.C. RWY. CO. R/W", MILITARY PARK HALLS ADDITION, RECORDED IN PLAT BOOK 12, PAGE 44;  
AND A REPLAT OF TRACT "A" OF MINOR SUBDIVISION PLAT, RECORDED IN OFFICIAL RECORD BOOK 12619, PAGE 1748,  
OF THE PUBLIC RECORDS OF PALM BEACH COUNTY, FLORIDA  
SHEET 3 OF 6



SEE SHEET 2 OF 6

TRACT A  
57.21 ACRES



THIS INSTRUMENT PREPARED BY  
JOHN E. PHILLIPS III, P.S.M. 4826

**BROWN & PHILLIPS, INC.**  
PROFESSIONAL SURVEYING SERVICES  
CERTIFICATE OF AUTHORIZATION # LB 6473  
1860 OLD OKEECHOBEE ROAD, SUITE 509  
WEST PALM BEACH, FLORIDA 33409 561-615-3988, 615-3991 FAX  
561-615-3988, 615-3991 FAX E-Mail: info@brown-phillips.com

SEE SHEET 4 OF 6